

Directions to Locations for 2018 UMA Gathering in Pittsburgh, PA from Sept. 26 to 28, 2018

Thank you for attending the 2018 Urban Manufacturing Alliance Gathering in Pittsburgh, PA - *Building Coalitions To Create Equitable Manufacturing Ecosystems*. The programming will take place in two main locations. Friday's programming will consist of a bus tour two three locations around the city, starting from the Ace Hotel Pittsburgh. **We encourage you use Google Maps or you map app/software of choice to find the best route based on your exact location in Pittsburgh via car, bike, or public transportation.** Uber and Lyft services are available as well. The addresses are below with photos of the buildings and entrances and other notes on getting there.

Using Public Transportation in Pittsburgh

Pittsburgh's buses and light rail trains use a scannable card system that can be purchased from various kiosks at most major stations near the shared hotels in the Downtown and East Liberty areas.

Buying Passes Downtown:

- [Port Authority Downtown Service Center](#) | 623 Smithfield St, Pittsburgh, PA 15222 (close to Downtown Hotels)
- [Steel Plaza Station](#) | Corner of 6th Ave and Ross St. (close to Downtown Hotels)

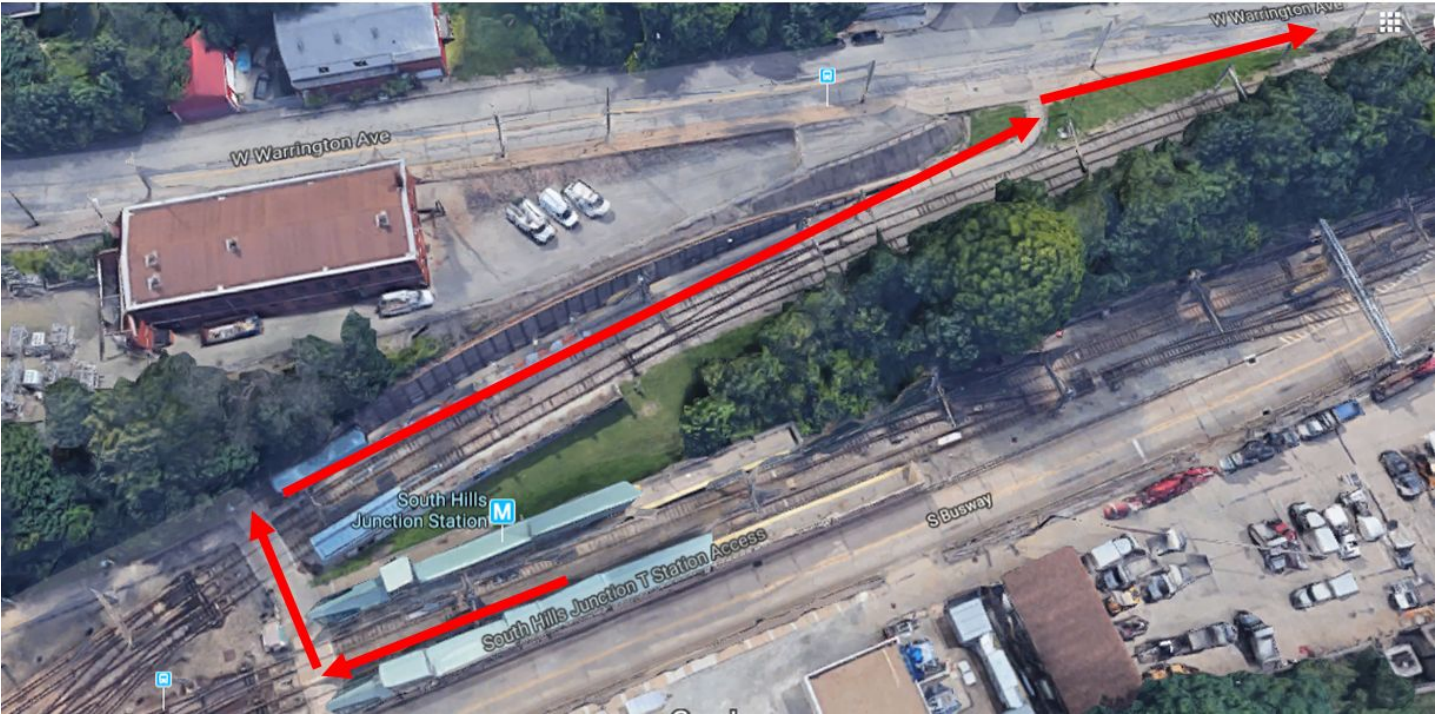
Buying Passes in East Liberty:

- [East Liberty Station](#) | Corner of Ellsworth Ave. and Shady Ave. (close to East Liberty hotels, and where you can take P1 or P2 to Downtown or Wilksburg Station near 7800 Susquehanna Street.)

Wed., Sept. 26 | UMA Gathering Welcoming Reception

[Commonwealth Press, 415 W Warrington Ave, Pittsburgh, PA 15210](#) (click link for directions)

- **Parking along W Warrington is very limited.** We suggest sharing rides with a driver service or taxi, or taking public transportations. The [Red Line](#) or [Blue Line](#) light rail trains will take you to the **South Hills Junction Station**. It's only two stops from the [Steel Plaza Station](#) Downtown. All stations from Downtown would work though. There is only one light rail line in Pittsburgh. If you are staying in an East Liberty Hotel, take the P1 or P2 on the East Busway to Downtown. Then walk to the Steel Plaza Station for the light rail trains.
- Once you get off the light rail trains at South Hills Junction Station, walk across the track's cross walk and find the long ramp up to W Warrington. Follow the sidewalk and ramp path below in red. The ramp path will end at W Warrington. Take a right and walk up W Warrington about 100 yards. **Commonwealth Press is a 20,000 SF building that will be on your left.**





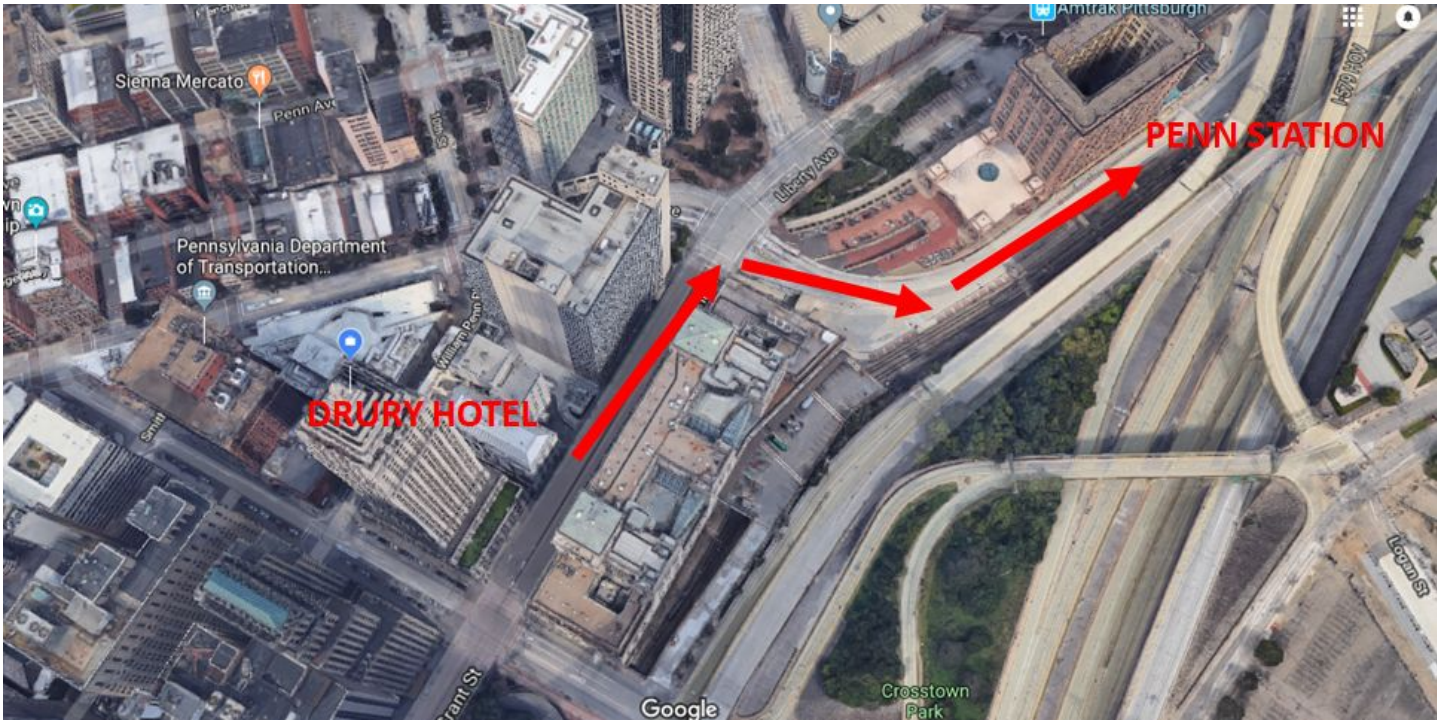
Thurs., Sept 27 | UMA Gathering Main Event
[7800 Susquehanna St, Pittsburgh, PA 15208](#) (click link for directions)

If you are driving to 7800 Susquehanna St. (7800), please use on street parking. We're trying to be respectful of the tenants and let them have first access to the parking lot. Parking in 7800's gravel lot is a secondary option. The building entrance is in the parking lot under the large blue and white 7800 sign. Public transportation from Downtown and/or East Liberty Hotels to 7800 is fast and easy.

From East Liberty Hotels, use the East Liberty Station which is close to the Indigo and Ace Hotels. See below for walking directions to the East Liberty Station.

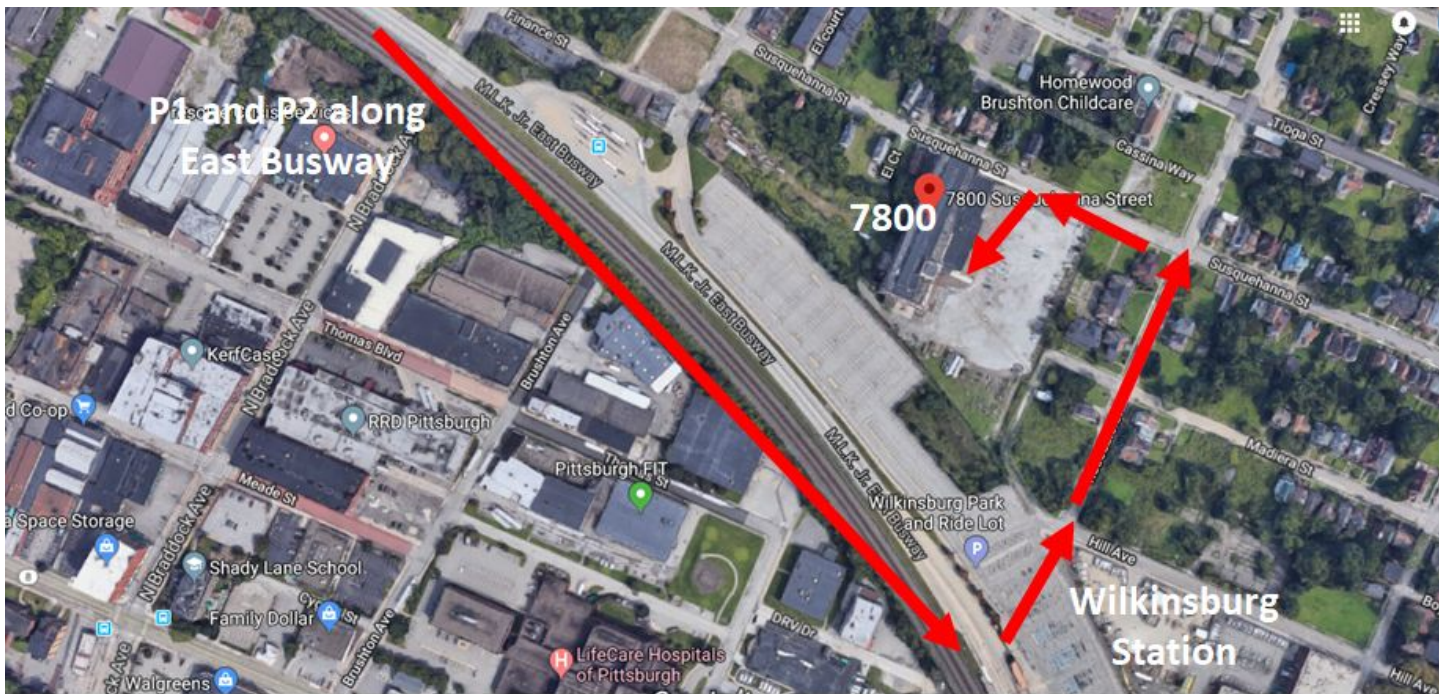


From Downtown Hotels, attendees will use the same East Busway, but will pick up the P1 or P2 from Penn Station. Below are walking directions from the Drury Plaza Hotel to Penn Station. Directions from the Monaco or Distrikt Hotels are similar.



The P1 and P2 buses come from Downtown and East Liberty along the East Busway. **Attendees should get off at Wilksburg Station.** Once at the Wilksburg Station, proceed through the parking lot to Rosedale St. Walk two blocks up Rosedale St. and turn left at Susquehanna St. See below for map.

Keep in mind that from the East Busway, Wilksburg Station, and your walking course, you will be able to see 7800. It's the largest structure in the area. The blue and white sign over the building entrance can be seen as well. After the UMA Gathering at 7800, you can reverse these directions and take the P1 or P2 back to East Liberty Station or Penn Station to access East Liberty or Downtown Hotels.



Fri., Sept. 28 | Urban Manufacturing Tours - Bus Pick Up and Drop Off
[Ace Hotel Pittsburgh, 120 S Whitfield St, Pittsburgh, PA 15206](#) (click link for directions)

The bus for the urban manufacturing tours will leave at 10am with no exceptions. The tour itinerary is tight, and the bus needs to leave on time to stay on schedule. It will pick up guests in front of the Ace Hotel. Attendees coming from Downtown can take the P1 or P2 on the East Busway from Penn Station to East Liberty Station. See above for walking directions from Downtown hotels to Penn Station. Once at the East Liberty Station, walk to the Ace Hotel.

